



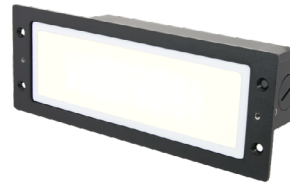
Horizontal Louver



Horizontal Visor



Opal Lens



Light Module



Housing

Product Features

GLIM Series BRK energy efficient architectural outdoor accent brick light that is available with lensing option for horizontal orientation. Face plate and housing from die-cast zinc-magnesium, face plate options including white opal face, vertical visor and louver in brushed nickel, antique bronze, white or custom RAL. Luminaire powered by a high efficient 3W light engine, available in 3000K, Amber and Blue LED. 85% of luminous flux after 50000 hours; UL IP65 wet location listed; universal 100-277V non-dimmable.

Technical Specifications

INPUT VOLTAGE	Universal Input AC120-277V
FREQUENCY	50/60hz
COLOR TEMPERATURE	3000K, Amber, Blue
COLOR RENDERING INDEX	80
DISTRIBUTION	Horizontal
IP RATING	IP65, Wet Location
LIFE SPAN	>50,000 Hours
DIMMING	Non-Dimmable
LUMEN OUTPUT	Up to 54 lumens



GLIM SERIES | GM-BRK

COLOR CHART (CHOOSE ONE)

CC
RAL

Specify Color Code:
Specify RAL Color:



GR - Green



BL - Blue



PP - Purple



PK - Pink



RD - Red



OG - Orange



YW - Yellow



MB - Matte Black



GB - Gloss Black



MW - Matte White



GW - Gloss White



OB - Oil Rubbed Bronze



GZ - Gloss Bronze



MS - Matte Silver



MBS - Matte Brass

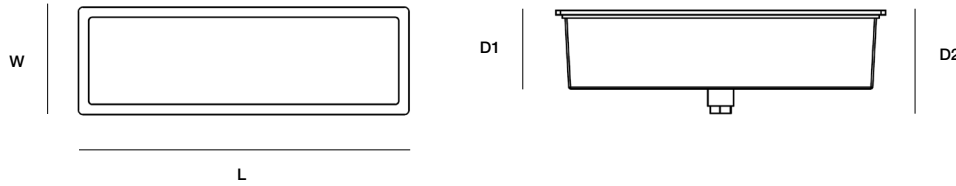


GBS - Gloss Brass

GLIM SERIES | GM-BRK

DIMENSIONS - MODULE / FACE PLATE

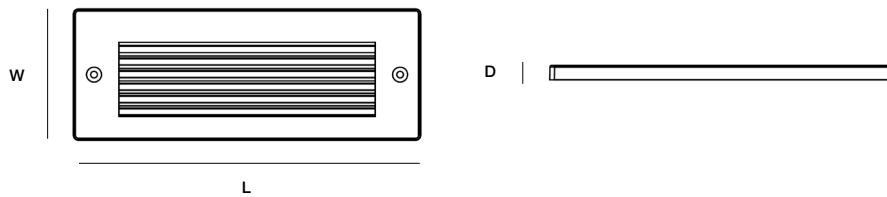
Light Module



DIMENSION

L7.05" x W2.32"
D1: 1.70"
D2: 2.23"

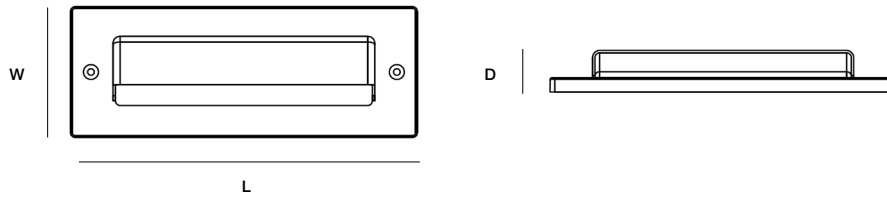
Face Plate: HL - Horizontal Louver



DIMENSION

L8.66" x W3.31" x D0.36"

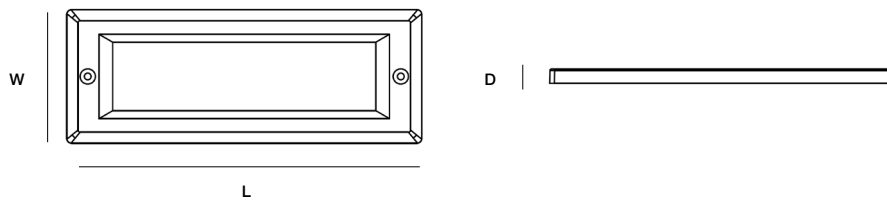
Face Plate: HV - Horizontal Visor



DIMENSION

L8.66" x W3.31" x D1.05"

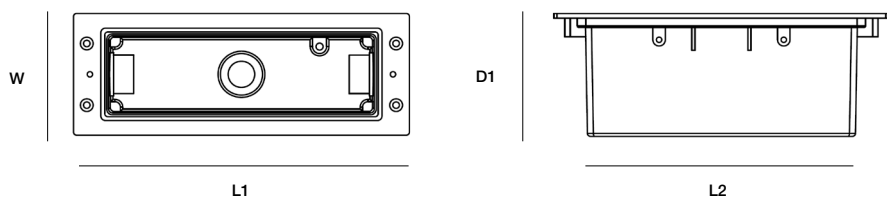
Face Plate: OP - Opal Lens



DIMENSION

L8.66" x W3.31" x D0.36"

Optional Housing



DIMENSION

Outside:
L1 8.46" x W 3.11"

Rough-in:
D1 3.14" x L2 6.86" x W(inner) 2.15"