

Product Features

LUX Series 1" linear cove luminaire housing from 1"x1" aluminum extruded housing, offered in 12", 16", 24" and 32" length profile, with the available housing finish of White and Bronze; premium PMMA opal lens offers 90 DEG smooth and even illumination, eliminating pixelation and striations on projected surface; seamless end-to-end connection with optional flexible jumper connector for corner and curved application; SAMSUNG LED with above 90CRI; selectable CCT options include 3000K, 3500K, 4000K; 50,000 rated hours; UL damp location listed; integral driver compatible with most standard incandescent dimmer to 5%.

Technical Specifications

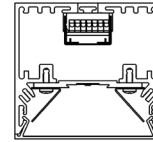
INPUT VOLTAGE	120V
FREQUENCY	50/60hz
COLOR TEMPERATURE	Selectable 3000K ~ 4000K
COLOR RENDERING INDEX	90+
DISTRIBUTION	90°
IP RATING	Damp Location
LIFE SPAN	>50,000 Hours
DIMMING	Triac Dimming



LUX-COVE SERIES | LX1-C

DIMENSIONS

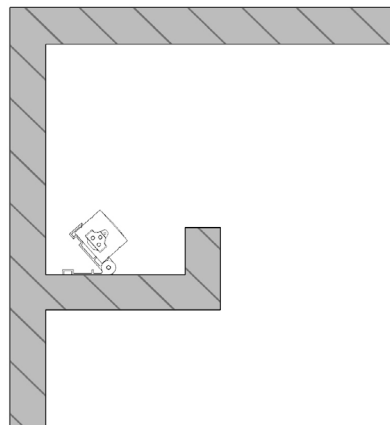
SERIES & SIZE	DIMENSION	Cross Section SECTION
LX1-C-L12	L12.43" x W1.1" x H0.94"	1
LX1-C-L16	L16.43" x W1.1" x H0.94"	1
LX1-C-L24	L24.38" x W1.1" x H0.94"	1
LX1-C-L32	L32.38" x W1.1" x H0.94"	1



H

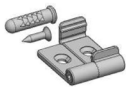
W

Cove Mounting



PARTS IN BOX

Mounting



Adjustable Mount Clip x 2
Anchor x 2
Mounting Screw x 2

Connector



Inline Connector x 1

OPTIONS

JUMPER



Jumper Connector
6" / 12" / 72"
White / Black

FEED



Feed with open end
(Hard wire)
72"
White / Black

PLUG



Feed with 3-prong plug
(Plug-n-Play)
72"
White / Black

BOX



Terminal Box
Terminal Box w/Sensor
White / Bronze
L8.25" x H1" x W3.63"
Occupancy: 30 sec
Coverage: 3FT

COMPATABILITY

COMPATIBLE DIMMER

LUTRON	MACL-153MR-WH	LEVITON	6161-A
	MACL-153P		IPL06-10Z
	TGCL-153P		IPI0-1LZ
	SCL-153PR-WH		IPI06-1LZ
	SCL-153-LA		6674
	DVCL-153P		6672-1LW
	CTCL-153P		6633-POG
	LGCL-153P		6681
	N-600		6151
	S-603PG-WH		6633-I
	DVELV-300P		18027
	DV-600P		45602
	CTELV-303P-WH		55431