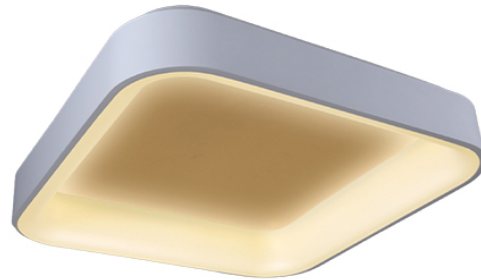




Suspended



Surface Mount

Product Features

Aeris Series - Square shaped versatile architectural luminaire housing from aluminum extruded profile; available with standard matte black, matte white, or custom RAL finish; available with 5FT steel cable suspension system through surface canopy or direct ceiling mount; power supply unit to be installed in canopy or remote; entire luminaire homogeneously illuminated, with Anti-UV PMMA lens; SAMSUNG LED with above 90CRI; available in 3000K, 3500K, and 4000K, 70% of luminous flux after 50000 hours; ETL damp location listed; universal power supply with 0-10V dimming capability.

Technical Specifications

INPUT VOLTAGE	Universal Input AC120-277V
FREQUENCY	50/60hz
COLOR TEMPERATURE	3000K, 3500K, 4000K
COLOR RENDERING INDEX	90
DISTRIBUTION	Direct
IP RATING	Damp Location
LIFE SPAN	50,000 Hours
DIMMING	0-10V Dimming, Non-Dimmable



AERIS SERIES | AE Square

SUBMITTAL WORKSHEET

Order Code Example: AE - S36 - 940 - QM - MB - blank

A B C D E F

A SERIES (CHOOSE ONE)

AE Aeris Series Square Shaped Luminaire

B SIZE & OUTPUT (CHOOSE ONE)

CODE		POWER & LUMEN		LPW	DIMENSION	SUSPENSION	DRIVER	SECTION
S15	QS	15W	1,275lm	85	L14.2" x W14.2" x H3.5"	4	1	1
S25	QS	25W	2,125lm	85	L17.7" x W17.7" x H3.5"	4	1	1
S36	QS	36W	3,600lm	85	L23.6" x W23.6" x H3.5"	4	1	1
S50	QS	50W	4,250lm	85	L31.5" x W31.5" x H3.5"	4	1	1

C CCT (CHOOSE ONE)

930	90CRI, 3000K
935	90CRI, 3500K
940	90CRI, 4000K

D MOUNTING

QM	QS	5FT Steel Cable Surface Mount Canopy
SM	QS	Surface Mount Kit, Remote Driver Enclosure

E FINISH

MB	Matte Black
MW	Matte White
CC	Customized Color

*see Customized Color Chart on Pg 3

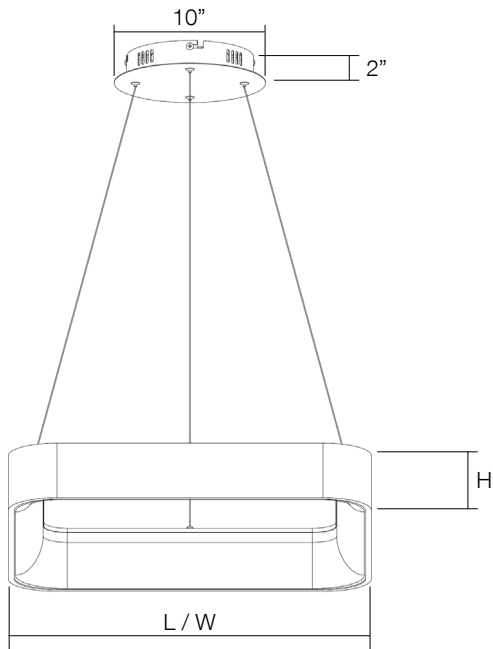
F OPTIONS

blank	120-277V, 0-10V Dimming
FAD	Customized Output (Consult Factory)
BAA	Assembled in America, Compliant with BAA (COTS)

AERIS SERIES | AE Square

DIMENSIONS

AERIS Square - Quick Mount



FIXTURE MODEL

AE-15

AE-25

AE-36

AE-50

DIMENSION

L14.2" x W14.2" x H3.5"

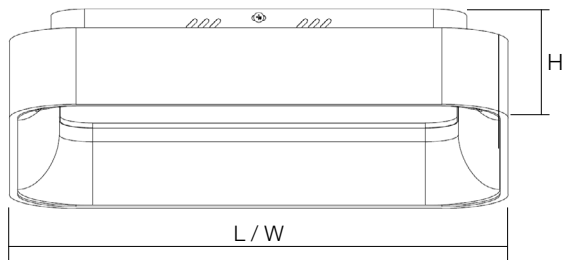
L17.7" x W17.7" x H3.5"

L23.6" x W23.6" x H3.5"

L31.5" x W31.5" x H3.5"

D = Outer Diameter

AERIS Square - Surface Mount



FIXTURE MODEL

AE-15

AE-25

AE-36

AE-50

DIMENSION

L14.2" x W14.2" x H4.6"

L17.7" x W17.7" x H4.6"

L23.6" x W23.6" x H4.6"

L31.5" x W31.5" x H4.6"

D = Outer Diameter

COLOR CHART (CHOOSE ONE)

CC
RAL

Specify Color Code:
Specify RAL Color:



GR - Green



BL - Blue



PP - Purple



PK - Pink



RD - Red



OG - Orange



YW - Yellow



MB - Matte Black



GB - Gloss Black



MW - Matte White



GW - Gloss White



OB - Oil Rubbed Bronze



GZ - Gloss Bronze



MS - Matte Silver



MBS - Matte Brass



GBS - Gloss Brass



CNH285 - American Walnut



QL0928 - European Cherry



QL0503 - Light Oak



QL0411 - Maple

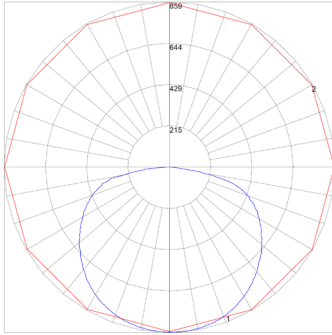


QL0908 - Palisander Santos

AERIS SERIES | AE Square

PHOTOMETRIC

IES: AE-S-36 D-100% @ 36W

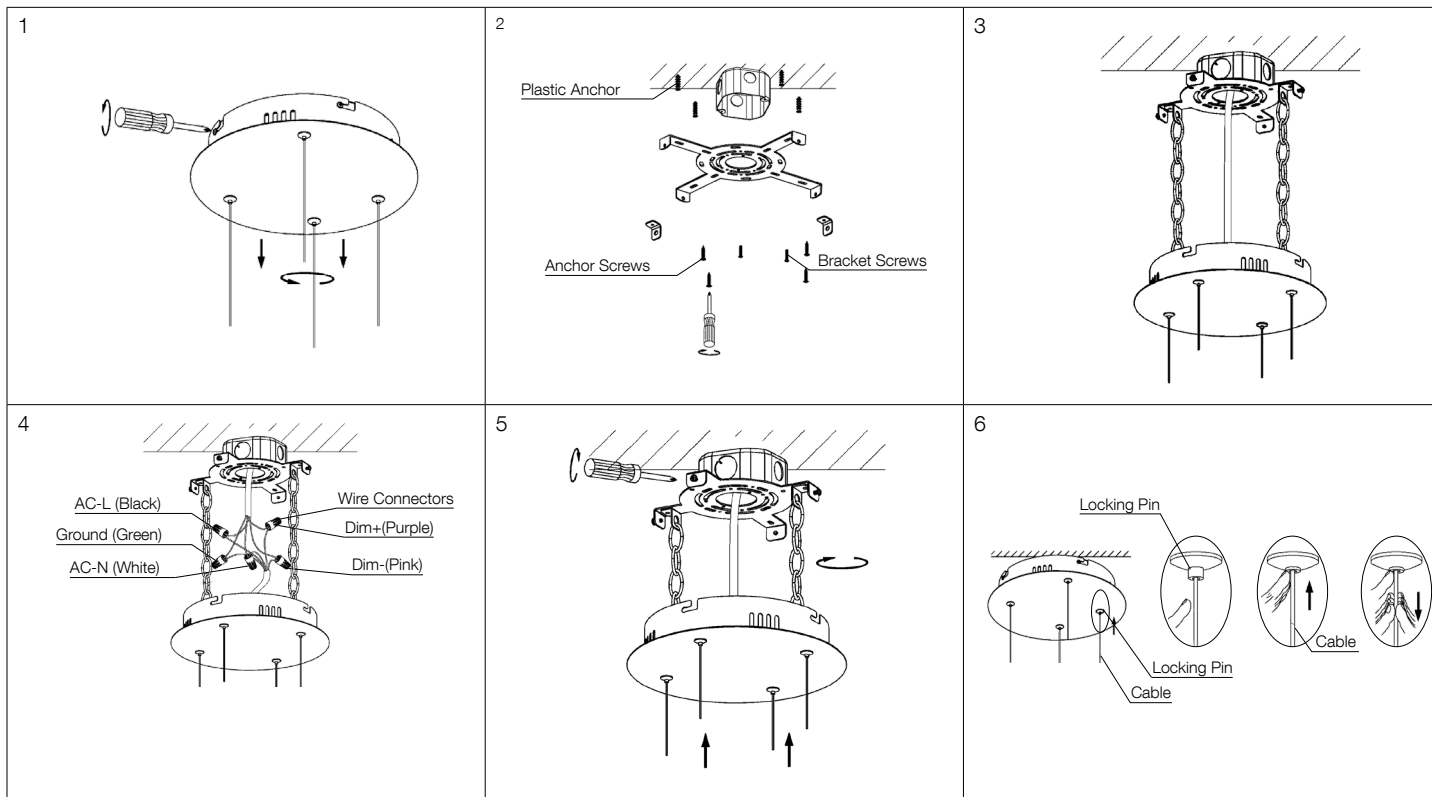


Zone	Lumen	Luminaire%
0-30	686	22.10
0-40	1150	37.10
0-60	2184	70.40
0-90	3105	100
0-180	3105	100

Lumen: 3105
Input Watts: 35.03 W
Efficacy: 89 LPW

INSTALLATION

Quick Mount Installation



Step 1: Use Screw driver to relief the Screws between Mounting Canopy and Bracket from side.

Step 2: Remove Plastic Anchors. Drill four or six $\phi 6$ mm ceiling holes according to the Mounting Bracket (six holes if fixture is $\geq 24" \times 24"$). Insert Plastic Anchors. Secure Mounting Bracket to J-Box using two M4x25 mm Bracket Screws.

Step 3: Use 4pcs M4*25 Self-Tapping Anchor Screws to fix Mounting Bracket on the ceiling.

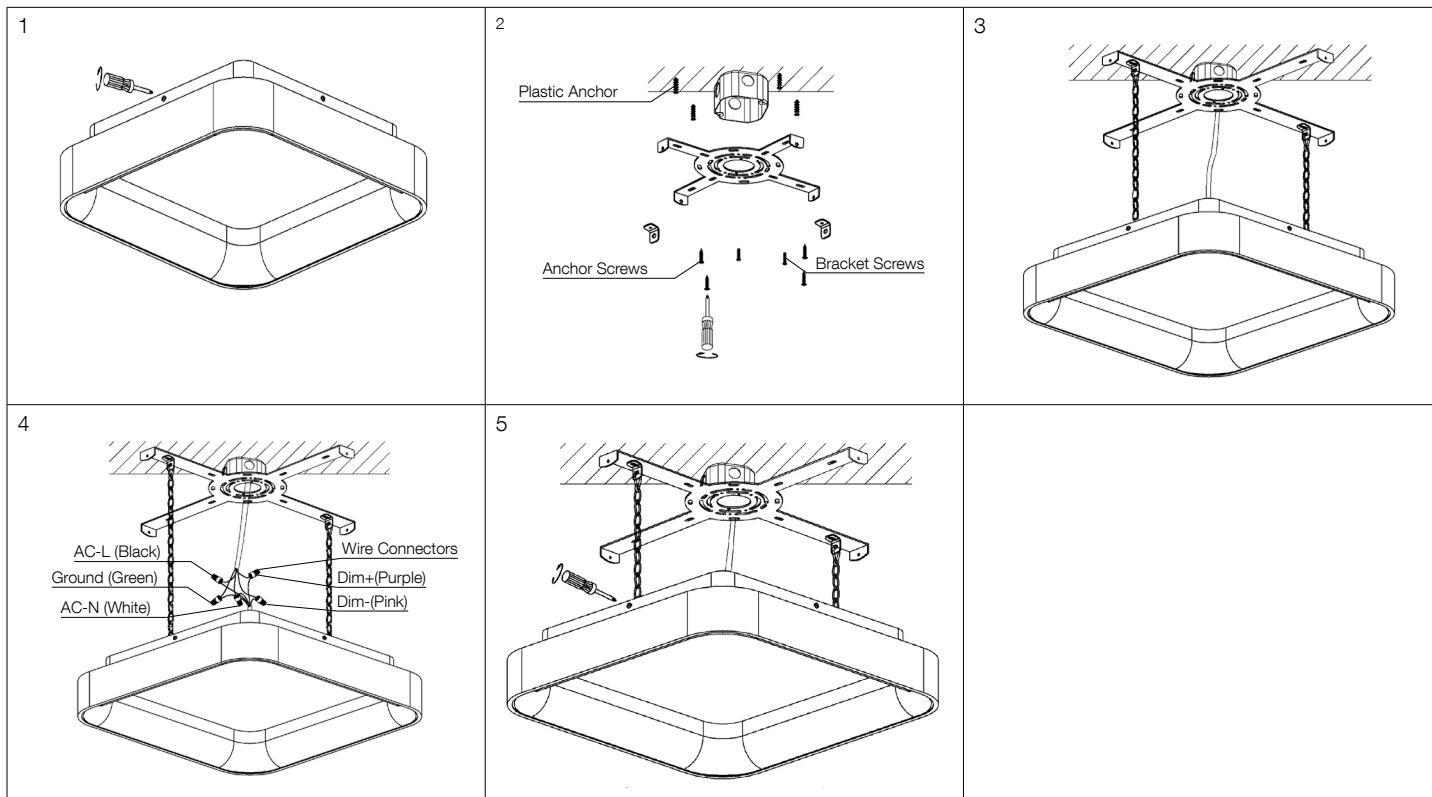
Step 4: Use wire connectors to connect L,N,G,DIM+,DIM- wires. After finish, put all wires with connector into J-Box.

Step 5: Use Screw driver to adjust Mounting Bracket and Mounting Canopy.

Step 6: Adjust the fixture safety cable and Aircraft cable length. Then loosen all the cables to finish installation.

INSTALLATION

Surface Mount Installation



Step 1: Use Screw driver to relief the Screws between Mounting Canopy and Bracket from side.

Step 2: Remove Plastic Anchors. Drill four or six $\phi 6$ mm ceiling holes per Mounting Bracket (six holes if fixture diameter is $\geq 24" \times 24"$). Insert Plastic Anchors. Secure Mounting Bracket to J-Box using two M4 \times 25 mm Bracket Screws.
Note: J-Box: Garvin 54171-S or equivalent; Bracket Screws by others.

Step 3: Use 4pcs M4 \times 25 Self-Tapping Anchor Screws to fix Mounting Bracket on the ceiling.

Step 4: Use wire connectors to connect L,N,G,DIM+,DIM- wires. After finish, put all wires with connector into J-Box.

Step 5: Keep the Slot hole as vertical line with Side screw, and make screw into slot, then rotate lamp body to secure and finish installation.