



Suspended



Surface Mount

Product Features

Aeris Series - Ring shaped versatile architectural luminaire housing from aluminum extruded profile; available with standard matte black, matte white, or custom RAL finish; available with 5FT steel cable suspension system through surface canopy or direct ceiling mount; power supply unit to be installed in canopy or remote; entire luminaire homogeneously illuminated, with Anti-UV PMMA lens; SAMSUNG LED with above 90CRI; available in 3000K, 3500K, and 4000K, 70% of luminous flux after 50000 hours; ETL damp location listed; universal power supply with 0-10V dimming capability.

Technical Specifications

INPUT VOLTAGE	Universal Input AC120-277V
FREQUENCY	50/60hz
COLOR TEMPERATURE	3000K, 3500K, 4000K
COLOR RENDERING INDEX	90
DISTRIBUTION	Direct
IP RATING	Damp Location
LIFE SPAN	50,000 Hours
DIMMING	0-10V Dimming, Non-Dimmable





Order Code Example: **AE** - **R36** - **940** - **QM** - **MB** - **blank**

A **B** **C** **D** **E** **F**

AE Aeris Series Ring Shaped Luminaire

CODE		POWER & LUMEN		LPW	DIMENSION	SUSPENSION	DRIVER	SECTION
R15	QS	15W	1,275lm	85	D14.2" x H3.5"	3	1	1
R25	QS	25W	2,125lm	85	D17.7" x H3.5"	3	1	1
R36	QS	36W	3,600lm	85	D23.6" x H3.5"	3	1	1
R50	QS	50W	4,250lm	85	D31.5" x H3.5"	3	1	1

930	90CRI, 3000K
935	90CRI, 3500K
940	90CRI, 4000K

QM	QS	5FT Steel Cable Surface Mount Canopy
SM	QS	Surface Mount Kit, Remote Driver Enclosure

MB	Matte Black
MW	Matte White
CC	Customized Color

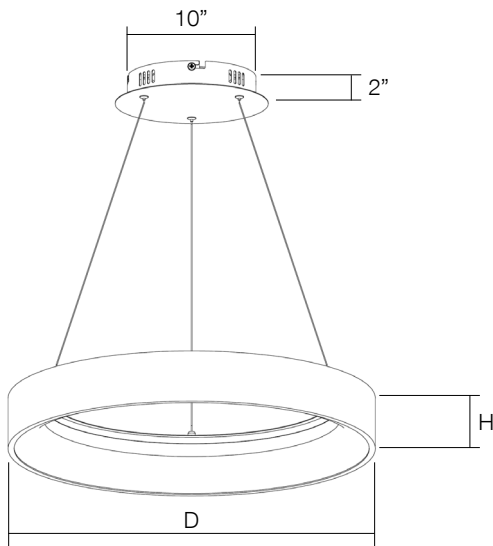
*see Customized Color Chart on Pg 3

blank	120-277V, 0-10V Dimming
FAD	Customized Output (Consult Factory)
BAA	Assembled in America, Compliant with BAA (COTS)

AERIS SERIES | AE

DIMENSIONS

AERIS - Quick Mount



FIXTURE MODEL

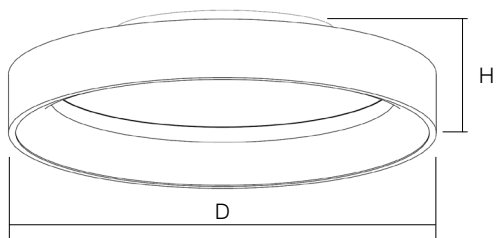
AE-15
AE-25
AE-36
AE-50

DIMENSION

D14.2" x H3.5"
D17.7" x H3.5"
D23.6" x H3.5"
D31.5" x H3.5"

D = Outer Diameter

AERIS - Surface Mount



FIXTURE MODEL

AE-15
AE-25
AE-36
AE-50

DIMENSION

D14.2" x H4.6"
D17.7" x H4.6"
D23.6" x H4.6"
D31.5" x H4.6"

D = Outer Diameter

COLOR CHART (CHOOSE ONE)

CC
RAL

Specify Color Code:
Specify RAL Color:



GR - Green



BL - Blue



PP - Purple



PK - Pink



RD - Red



OG - Orange



YW - Yellow



MB - Matte Black



GB - Gloss Black



MW - Matte White



GW - Gloss White



OB - Oil Rubbed Bronze



GZ - Gloss Bronze



MS - Matte Silver



MBS - Matte Brass



GBS - Gloss Brass



CNH285 - American Walnut



QL0928 - European Cherry



QL0503 - Light Oak



QL0411 - Maple

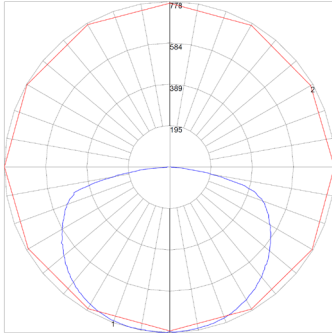


QL0908 - Palisander Santos

AERIS SERIES | AE

PHOTOMETRIC

IES: AE-36 D-100% @ 36W

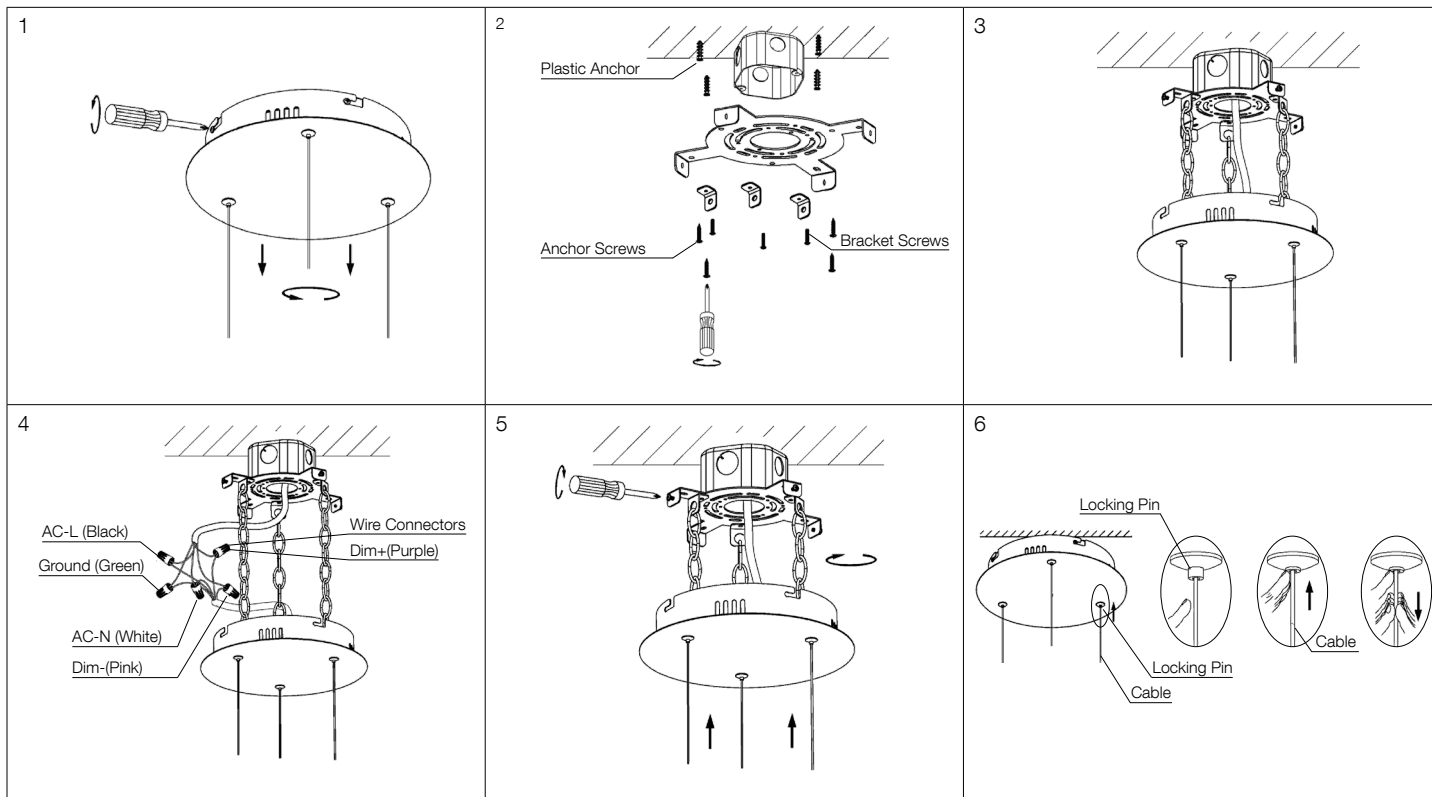


Zone	Lumen	Luminaire%
0-30	633	20.10
0-40	1077	34.20
0-60	2116	67.20
0-90	3149	100
0-180	3149	100

Lumen: 3149
Input Watts: 36.08 W
Efficacy: 87 LPW

INSTALLATION

Quick Mount Installation



Step 1: Use Screw driver to relief the Screws between Mounting Canopy and Bracket from side.

Step 2: Remove Plastic Anchors. Drill seven $\varnothing 6$ mm ceiling holes according to the Mounting Bracket (4 for Bracket Screws, 3 for Safety Bracket Screws). Insert Plastic Anchors. Secure Mounting Bracket to J-Box using two M4 \times 25 mm Bracket Screws.
Note: J-Box: Garvin 54171-S or equivalent; Bracket Screws by others.

Step 3: Use 4pcs M4 \times 25 Self-Tapping Anchor Screws to fix Mounting Bracket on the ceiling.

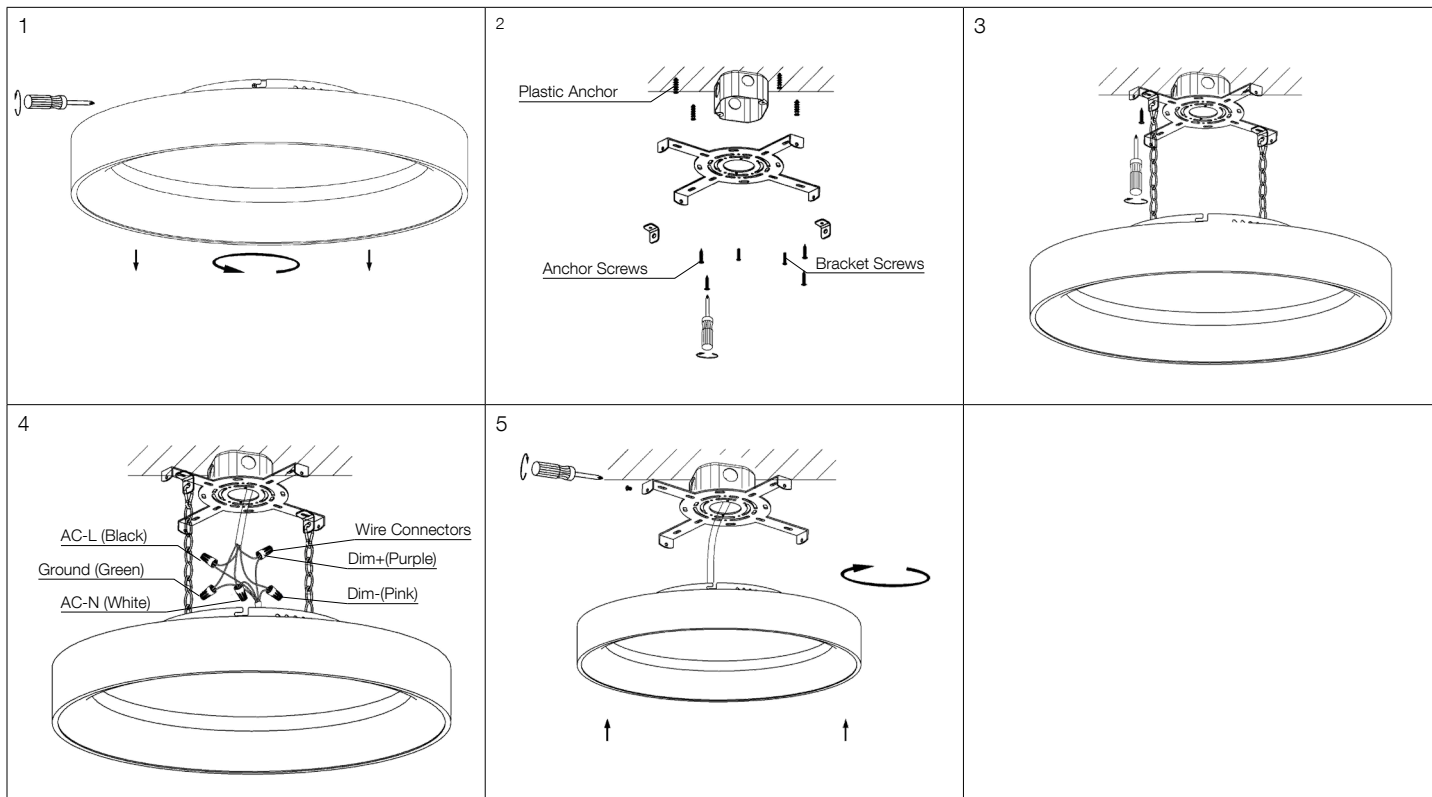
Step 4: Use wire connectors to connect L,N,G,DIM+,DIM- wires. After finish, put all wires with connector into J-Box.

Step 5: Use Screw driver to adjust Mounting Bracket and Mounting Canopy.

Step 6: Adjust the fixture safety cable and Aircraft cable length. Then loosen all the cables to finish installation.

INSTALLATION

Surface Mount Installation



Step 1: Rotate Canopy and take it out from Bottom Bracket as below.

Step 2: Remove Plastic Anchors. Drill four or six $\phi 6$ mm ceiling holes per Mounting Bracket (six holes if fixture diameter is $\geq 24"$). Insert Plastic Anchors. Secure Mounting Bracket to J-Box using two M4x25 mm Bracket Screws.
Note: J-Box: Garvin 54171-S or equivalent; Bracket Screws by others.

Step 3: Use 4pcs M4*25 Self-Tapping Anchor Screws to fix Mounting Bracket on the ceiling.

Step 4: Use wire connectors to connect L,N,G,DIM+,DIM- wires. After finish, put all wires with connector into J-Box.

Step 5: Keep the Slot hole as vertical line with Side screw, and make screw into slot, then rotate lamp body to secure and finish installation.